

Alignment *Audit*



A strategic recalibration for women who are already successful but know something needs to shift.

Grow with
Moxie



Nice to meet you

THE MOXIE COACH



Hello, I'm Claire, an accredited Transformational Coach, Operational Business Growth Consultant and qualified teacher.

I've run multiple businesses, managed multi-million-pound budgets and large teams of people. I've taught thousands of students of all ages and mentored business owners at all stages of growth.

I'm passionate about doing business differently: growing your business whilst still finding time for a life outside of work. I believe any business with the right strategies, support and effort has the potential to grow.

Claire x



The *Moxie* Method™

The Moxie Method™ is designed to give you the knowledge and skills to work with the thoughts and feelings you are experiencing. Empowering you to make the changes you know are right for you deep down.

All Moxie Method programmes, workbooks and courses are designed to get you the result you desire as quickly as possible.

Claire x
mox·ie
/'mox.si/ noun

- Confidence; courageous spirit.
- Determination; perseverance.
- Skill; know-how.



You don't have a strategy problem.



You're capable.
You've built something real.
On paper, it works.

And yet.

It feels heavier than it should. Decisions take longer. Certain clients drain you. You hesitate where you used to move quickly. You're tolerating things you once said you wouldn't.

Misalignment rarely looks dramatic.

It looks like quiet compromise.

This audit isn't about finding new goals. It's about identifying where you've drifted from your own standards — and recalibrating accordingly.

No fluff.
No personality typing.
Just clarity.

How this works

Each section of this audit maps to one step of the M.O.X.I.E. Method™ — the framework at the heart of Grow With Moxie. You'll move through awareness, ownership, expansion, identity and protection. In that order. For a reason.

M — Meet Yourself Honestly
O — Own Your Direction
X — Expand Gently
I — Identify as the Next Version
E — Establish What Protects You

Work through each section in order. Don't skip ahead.

M

MEET YOURSELF HONESTLY

O

OWN YOUR DIRECTION

X

EXPAND GENTLY

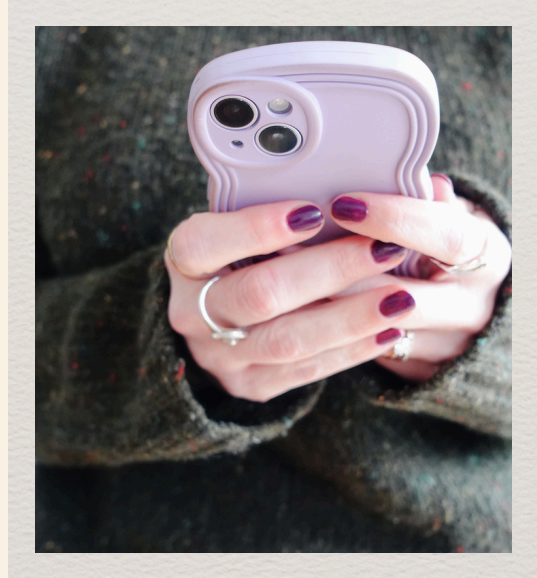
I

IDENTIFY AS THE NEXT VERSION

E

ESTABLISH WHAT PROTECTS YOU

The Moxie
Method™



Meet Yourself Honestly



Where does it feel heavier than it should?

Before you change anything, you notice.
Not to fix. Not to judge. Just to see clearly.

This is where self-trust begins — not with confidence, but with honest awareness.

Write without censoring yourself.

- ▶ Where in your business feels unnecessarily heavy right now?
- ▶ What are you tolerating that no longer fits?
- ▶ Where are you over-delivering?
- ▶ Where are you undercharging?
- ▶ Where are you saying yes when you mean “not like this”?
- ▶ What decisions are you postponing?

You are not fixing anything yet.
You are observing.
Clarity before action.



Own Your Direction



Define your operating standards

Owning your direction means making decisions from your own standards — not from what you think you should want, or what you've always done.

Your values are not decorative.
They are decision filters.

When they're unclear, you second-guess.
When they're compromised, you resent.
When they're ignored, you drift.

On the next page is a curated list of core drivers.

As you read through the list:

- ▶ **Circle the words that make you feel steady.**
- ▶ **Star the ones you are currently compromising.**
- ▶ **Underline the ones you want to operate from more consistently.**

Then narrow your list to 3–5 that feel non-negotiable.

Not aspirational.
Not impressive.
True.

No one gives you these standards.
You choose them. That's the ownership.



Core drivers

Circle. Star. Underline. Then narrow to your 3–5.

Autonomy	Impact
Authority	Creativity
Integrity	Learning
Excellence	Focus
Mastery	Ambition
Discernment	Stability
Sovereignty	Peace
Decisiveness	Joy
Depth	Connection
Simplicity	Honesty
Courage	Leadership
Presence	Confidence
Clarity	Influence
Growth	Financial
Contribution	Strength
Freedom	Expansion
Power	Self-Expression
Elegance	Boundaries
Authenticity	Precision
Trust	Standards
Respect	

Add your own if something essential is missing:





Expand Gently



From values to standards

Expansion isn't just about doing more. It's about growing into clearer, more deliberate ways of operating.

This is where you stretch. Not force.

Choose your 3–5 core drivers. For each one, work through the questions below. Be specific — this is where your standards become visible and actionable.



Value One

► What does this look like in action in your business?

► Where are you currently honouring this?

► Where are you currently compromising this?

Value Two

▶ **What does this look like in action in your business?**

▶ **Where are you currently honouring this?**

▶ **Where are you currently compromising this?**

Value Three

▶ **What does this look like in action in your business?**

▶ **Where are you currently honouring this?**

▶ **Where are you currently compromising this?**

Notes

Identify as the Next Version



Immediate recalibration

You don't need a reinvention.

You need to act from the version of you who has already decided.

Identity shifts first. Results follow.

Not the helper.

Not the one who waits.

Not the woman who tolerates.

The woman who recalibrates.



Choose 1–3 deliberate recalibrations. Not 20. Not a plan. Just a decision.

- ▶ **What stops immediately?**

- ▶ **What changes this month?**

- ▶ **What boundary gets drawn?**

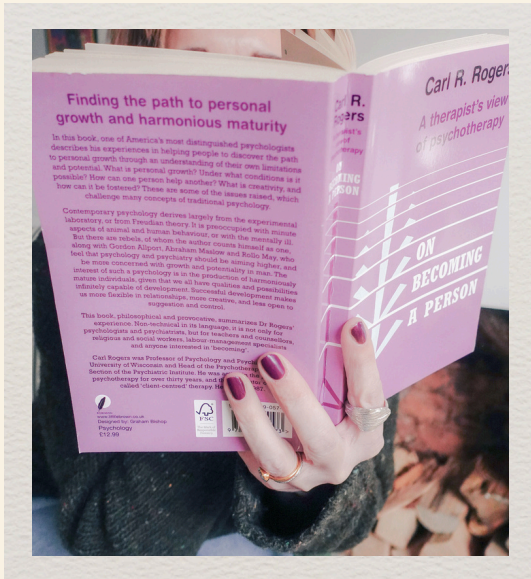
- ▶ **What conversation needs to happen?**

- ▶ **What decision gets made?**

Keep it contained.

Clarity becomes power when it's acted on.

This is you becoming the next version. On purpose. Quietly. Properly.



Establish What Protects You



The cost of misalignment

Establishing what protects you begins with naming what's currently costing you.

Misalignment doesn't usually explode.

It erodes.

Boundaries aren't walls. They're structure. But you can't build the structure until you see the gap.

Where is operating below your own standards costing you?

- ▶ Revenue

- ▶ Energy

- ▶ Confidence

- ▶ Momentum

- ▶ Self-trust

- ▶ Time

What are you paying — quietly — to avoid a necessary shift?

Successful women rarely implode.

They slowly tolerate themselves into frustration.

Name the cost. That's where protection begins.





When clarity isn't enough

For some women, this audit will be sufficient.

For others, it will confirm what they've already sensed:

You've outgrown the way you're currently operating.

Not because you're failing.
Because you're ready for a cleaner standard.

Private coaching is not about fixing you. It's about recalibrating the way you make decisions, hold boundaries, and define success — at the level you're actually capable of.

It is deliberate work.
Measured.
Structured.
Honest.

No performance.
No theatrics.
No endless processing.

Just precise conversations that shift how you operate.

If you recognise yourself in these pages, you'll know whether this is the next step.

Explore 1:1 coaching details here: → [Coaching Options](#)





YOU DON'T NEED TO BURN EVERYTHING DOWN.

You need alignment.



Alignment is built through standards.
Standards are upheld through decisions.
And decisions become easier when you trust yourself.

M – MEET YOURSELF HONESTLY
O – OWN YOUR DIRECTION
X – EXPAND GENTLY
I – IDENTIFY AS THE NEXT VERSION
E – ESTABLISH WHAT PROTECTS YOU

This is what it means to Grow With Moxie.

Claire x



CLAIRE@GROWWITHMOXIE.CO.UK



[@GROW_WITH_MOXIE](https://www.instagram.com/@GROW_WITH_MOXIE)